



PT050 air assisted & guarded, reduced hydraulic flow, rotary atomizer

The PT050 has all the features of our original PT100 Atomizer, and requires only half the hydraulic oil and power! Now it's easier to create large row-crop booms that were previously impractical due to excessive power needs. Also ideal for smaller entry level sprayers powered exclusively off of tractor auxiliary hydraulics. Building a sprayer with PT050's is easier and more economical than ever before.



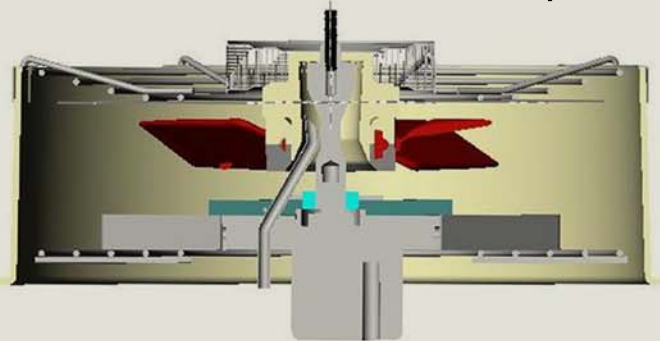
Perfect for:

- *field crops, vegetables*
- *bushes, nursery*
- * wide booms- to 90 feet*
- *self-propelled sprayers*
- * cost conscious small fruit & vegetable growers*
- *Do-it-yourselfers*

Features:

- *2 GPM Hydraulic oil consumption per atomizer.*
- *non-adjustable blade pitch, approximately 5,000 CFM (150 cmm) airflow.*
- *low/no water pressure requirements.*
- *non-clogging: if you can pump it, you can spray it*
- *atomizes from 0 to 3.5 GPM (114 LPM).*
- *low maintenance & long service life*

Cutaway shows open fluid path free of obstructions. Seal free, simple design. Your PT050 wont need much service, but when it does, it's fast & easy.

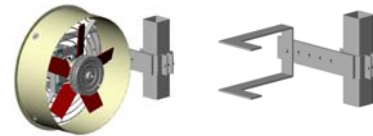
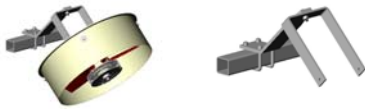


Proptec™ PT050 air-assisted & guarded atomizer: Specifications:

- ✓ Size: 20" Diameter by 12" deep, various mounting brackets(see below).
- ✓ Hydraulic motor, 1.4cc, Ultra-high efficiency, Viton seals. 2 gallons (8 liters) per minute max flow, 2500 PSI (165 bar) max pressure. Pressure requirements will vary with oil temperature and chem flow rate. Max input power: 3 HP. Requires case drain line. May not be run in series.
- ✓ Standard operating speed: 5000 RPM. Slower speeds can be used to achieve larger droplets and less airflow.
- ✓ Fiber-composite, Non-adjustable fixed pitch, replaceable blades.
- ✓ All stainless steel frame and hardware, all parts UV stabilized and chemical resistant.
- ✓ Wide range of droplet spectra possible. Atomizer performance virtually unaffected by wear. Atomizers last thousands of hours, even in severe environments.
- ✓ Ease of use: 1 to 4 bolts removes any part.
- ✓ Guaranteed parts availability, Lifetime guarantee on workmanship.
- ✓ 3/8" (10 mm) chemical infeed line.

All Proptec Atomizers are supplied with a mounting bail, complete with a ½" mounting hole. Boom mount brackets are optional. Choose from the following Mounting Options:

PT050-A. Straight Bail (Left). Best for downward facing applications on 2" tubes. PT100-1100 boom bracket sold separately.

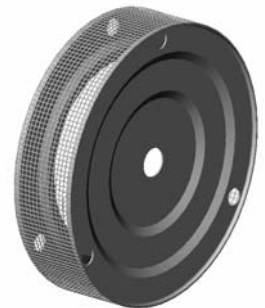


PT050-B. 'L' Bail (right). Best for horizontal mounting, mobile applications, and mounting on 3 or 4" square tubing. PT100-1101 boom bracket sold separately.

Choose an atomizer basket: The basket is the working part of the atomizer. Droplet size is approximate; please ask for droplet size table. Choose from 3 styles:

Coarse mesh (standard): 12 mesh x .023" wire gives droplet spectra approximately 70-80 microns VMD at 5000 RPM. Highly clog resistant; durable. Soldered joints for maximum strength. Can handle up to 6 Gallons per minute flow.

Fine mesh: 30 mesh .015" wire atomizer. Best for misting/cooling/humidifying applications. Finer droplet spectra- 50-70 microns at 5000 RPMs with fewer coarse droplets. Fluid should be pre-filtered through a 50-mesh filter to avoid clogging with long-term use. Max flow 1 gallon per minute.



Severe duty: 12 mesh x .035" thick wires welded to the endplates, For situations where high heat, strong acid, or frequent impacts in-process would make a Standard basket unsuitable. Slightly larger droplet spectra, 90-110 micron at 5000 RPM. Can handle up to 6 Gallons per minute flow.